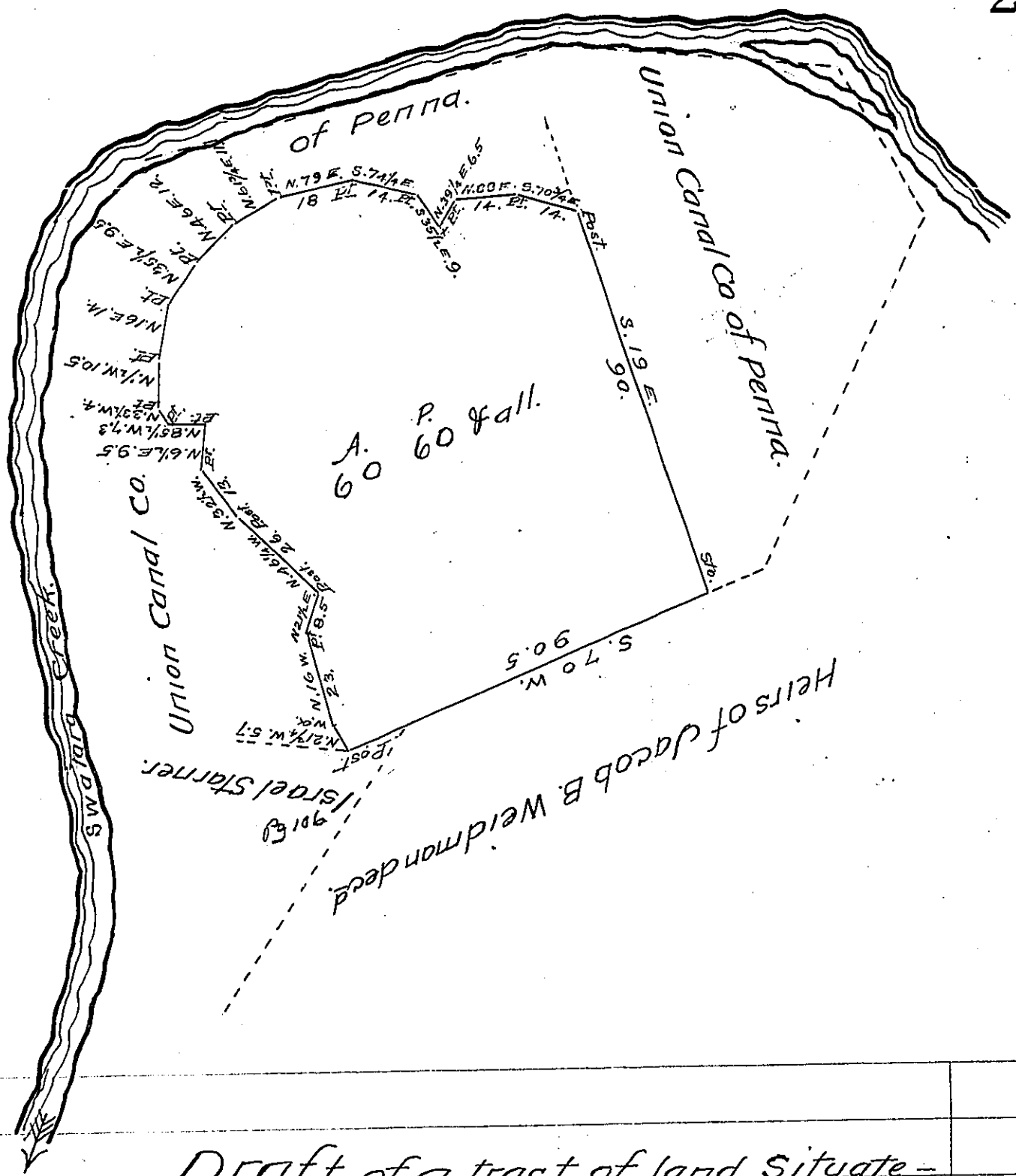


Mag. N. 2 1/4° W.  
True Merid.  
S.



Draft of a tract of land Situate -  
 in Swatara township, Lebanon County Containing  
 Sixty acres and Sixty perches and allowance of six  
 per cent for Roads &c. Surveyed April 20<sup>th</sup> 1847 by  
 Adam Grittinger and by me examined this 6<sup>th</sup>  
 day of August 1870 and found to be correct.  
 Being a part 70.5 acres 150 perches originally sur-  
 veyed in pursuance of a Warrant granted to John  
 Smiley dated October 28<sup>th</sup> 1774.

To Hon. J. M. Campbell } Henry C. Grittinger.  
 Surveyor Genl. of Penna } C. S.

IN TESTIMONY that the above is a copy of the original remaining on file in  
 the Department of Internal Affairs of Pennsylvania, made  
 conformably to an Act of Assembly approved the 16th day of  
 February 1833, I have hereunto set my hand and caused  
 the Seal of said Department to be affixed at Harrisburg,  
 this eleventh day of April 1907.

*Isaac D. Brown*  
 Secretary of Internal Affairs.